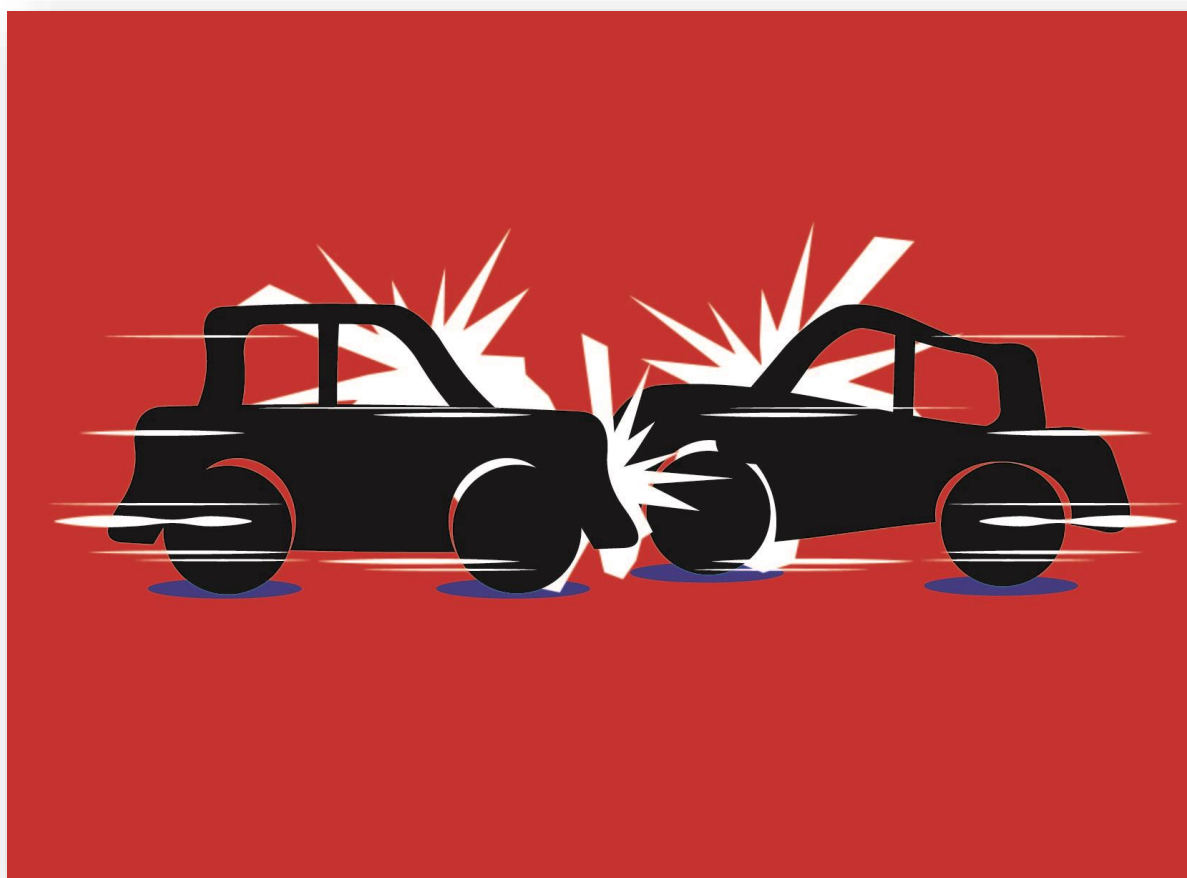


# Local Highway Safety Improvement Program: LHSIP 2017 Application

## Idaho Local Highway Jurisdictions

Submittal Deadline: January 30, 2015



### Local Highway Technical Assistance Council

3330 Grace Street

Boise, Idaho 83703

208-344-0565/ 1-800-259-6841

Fax 208-344-0789

[www.lhtac.org](http://www.lhtac.org)



# INCLUDED IN THIS PACKET

## 1. APPLICATION INFORMATION

1.1 [Program Background](#)

1.2 [Use of Funds](#)

1.3 [Eligibility](#)

## 2. APPLICATION CHECKLIST

2.1 [Analyzing the Data](#)

2.2 [Completing the Application](#)

2.3 [Limit and Exclusions](#)

## 3. APPLICATION

3.1 [2017 Local Highway Safety Improvement Program Application](#)

3.2 [ITD 2435 Federal-aid Project Request](#)

3.3 [ITD 1150 Cost Summary Sheet](#)

3.4 [ITD 1983 Local Public Agency's Certificate of Completion of Right-of-Way Activities](#)

## 1. APPLICATION INFORMATION

### 1.1 PROGRAM BACKGROUND:

#### Local Highway Safety Improvement Program (LHSIP)

The Highway Safety Improvement Program (HSIP) is a federally funded program aimed at eliminating Fatal and Type A Serious Injury crashes on the roadway system. In 2012 LHTAC began receiving approximately \$3.7M of the state HSIP funds and administering the Local Highway Safety Improvement Program (LHSIP) for FY 2014. Eligibility for LHSIP is based on the number crashes per jurisdiction using the previous five years of crash data. The 13 jurisdictions with the highest amount of Fatal and Type A Serious Injury crashes per ITD district are identified, and notified in the fall to begin the application process. This federally funded program requires a local match not to exceed 7.34%.

### 1.2 USE OF FUNDS:

LHSIP funds can be used for a variety of projects that can reduce the amount of crashes in the area identified. Some examples of potential projects include:

New pavement markings	Split new signals, signal timing	Pedestrian crossing
New or increased signing	Access control	Shoulder widening
Flashing beacon	Guardrail	Retroreflective backplates
Lighting improvements	Road safety audit	Road diets

### 1.3 ELIGIBILITY:

Eligibility is based on the number of crashes your jurisdiction has had over the past five year period. The 13 jurisdictions with the highest amount of Fatal and Type A Serious Injury crashes per ITD are eligible to apply. The list of eligible jurisdictions is posted on our website, and eligible jurisdictions will be notified.

## 2. APPLICATION CHECKLIST

### 2.1 ANALYZING THE DATA

1. The crash data is available online at <http://gis.lhtac.org/safety> or by visiting <http://lhtac.org/programs/lhsip/>, scrolling to the bottom of the page and selecting “crash data”.
2. Once you have accessed the site, select your ITD District, and then your jurisdiction in the upper left corner.
3. The map will zoom to your Local Highway Jurisdiction and the crashes can be viewed. You may select an individual crash, or using the mouse, select a group of crashes. Crash information will display below the map.
4. You may sort your crash information by selecting any of the headings.
5. You may filter crash data by selecting “Crash Filters” from the top left corner.  
(If assistance is needed, please contact Mathew Syphus, Craig Herndon or Laila Kral at LHTAC.)
6. Determine the type of crash you would like to address with your improvement.
7. Count amount of each type of crash severity in desired area/location of safety improvements (Fatal, Type A, Type B, Type C, PDO).
8. Using your experience, area knowledge, and the FHWA Crash Reduction Factor Toolkits, select a Crash Reduction Counter Measure and Crash Reduction Factor (CRF) for the area/location you have chosen to address. You may propose implementing more than one Counter Measure in an area. The CRFs will be added together but are capped at a total CRF of 60% (will automatically add and cap at 60% on application).
  - We highly encourage you to look at systemic (grouped location or corridors) solutions rather than single site locations. Example: Using crash data at one intersection and applying solutions to multiple intersections with the same characteristics.
  - If you cannot determine what counter measure is appropriate, please contact Laila Kral at LHTAC for assistance.
  - A small amount of funds may be used for Road Safety Audits. Contact LHTAC for more information.

## 2.2 COMPLETING THE APPLICATION

1. Complete the application with data collected in steps 1-3. The top portion is LHJ contact information.

Please access application online, or email [lkral@lhtac.org](mailto:lkral@lhtac.org) for a copy to be emailed to you.

- Line 1 – Type of project (Single Site, Systemic, or Road Safety Audit)
  - Line 2 – Number of Fatal Crashes
  - Line 3 – Number of Type A Crashes
  - Line 4 – Number of Type B Crashes
  - Line 5 – Number of Type C Crashes
  - Line 6 – Number of Property Damage Only (PDO) Crashes
  - Line 7 – Counter Measure 1, Crash Reduction Factor 1, Service Life 1, Project Cost 1
  - Line 8 – Counter Measure 2, Crash Reduction Factor 2, Service Life 1, Project Cost 2
  - Line 9 – Counter Measure 3, Crash Reduction Factor 3, Service Life 1, Project Cost 3
- \*Please note that project cost should include Environmental, LHTAC, CE&I and ITD portion of cost. Cost adjustments can be made by LHTAC staff after the application has been received.
- RESULT (Red Box) – Automatically calculated Cost/Benefit Ratio.

2. Complete a one page project description explaining need, location, type of counter measure, calculated match amount and other pertinent information to your project.

3. Complete [ITD 2435 Form](#), [ITD 1150 Form](#), and [ITD 1983 Form](#) for your proposed project.

4. Include one page vicinity map showing project location(s).

5. Funded projects are for the Fiscal Year 2017. The projects are federally funded and may require a 7.34% local match. At this time, right-of-way acquisition cannot be part of the funding and Right-of-Way must be secured. Funds can be used for design and/or construction. Please include the estimated match amount in your one page project description.

6. All projects must meet Federal and State standards, signal warrants and ADA requirements.

## 2.3 LIMITS AND EXCLUSIONS

1. Applications for projects must include a Fatal or Type A Serious Injury crash. Projects without a Fatal or Type A Serious Injury Crash will be removed from consideration.

2. You cannot apply to improve an intersection or location if that location has previously been awarded LHSIP funds.

3. If applying for a signal, a current warrant analysis must have been completed, and warrants must be met. A copy of the warrant analysis is required with the application submittal.

4. If applying for a project at the intersection of a state road, the LHJ must have been in contact with ITD and ITD must agree to pay their appropriate share.

5. No project with wetland impacts greater than 1/10 of one acre will be funded. Projects with less than 1/10 of one acre will be approved upon wetland site review.

## 3. APPLICATION

### 3.1 2017 LOCAL HIGHWAY SAFETY IMPROVEMENT PROGRAM APPLICATION

The actual application is in Microsoft Excel and has built-in formulas. A copy of the form can be found online at [www.lhtac.org/programs/lhsip/](http://www.lhtac.org/programs/lhsip/).

Along with the application you must submit the following:

- A one page project description
- A vicinity map
- [ITD 2435 Form](#)
- [ITD 1150 Form](#)
- [ITD 1983 Form](#)
- A completed signal warrant analysis if applying for signal work

## ITD 2435 Local Federal-Aid Project Request

### Instructions

1. Under Character of Proposed Work, mark appropriate boxes when work includes Bridge Approaches in addition to a Bridge.
2. Attach a Vicinity Map showing the extent of the project limits.
3. Attach an ITD 1150, Project Cost Summary Sheet.
4. Signature of an appropriate local official is the only kind recognized.

**Note:** In Applying for a Federal-Aid Project, You are Agreeing to Follow all of the Federal Requirements Which Can Add Substantial Time and Costs to the Development of the Project.

Sponsor (City, County, Highway District, State/Federal Agency)				Date	
Project Title (Name of Street or Road)		F.A. Route Number	Project Length	Bridge Length	
Project Limits (Local Landmarks at Each End of the Project)					
Character of Proposed Work (Mark Appropriate Items)					
Excavation	Bicycle Facilities	Utilities	Sidewalk		
Drainage	Traffic Control	Landscaping	Seal Coat		
Base	Bridge(s)	Guardrail			
Bit. Surface	Curb & Gutter	Lighting			
Estimated Costs (Attach ITD 1150, Project Cost Summary Sheet)					
Preliminary Engineering (ITD 1150, Line 1)		\$			
Right-of-Way (ITD 1150, Line 2)		\$			
Construction (ITD 1150, Line 18)		\$			
Preliminary Engineering By:      Sponsor Forces      Consultant					
Checklist (Provide Names, Locations, and Type of Facilities)					
Railroad Crossing					
Within 2 miles of an Airport					
Parks (City, County, State or Federal)					
Environmentally Sensitive Areas					
Federal Lands (Indian, BLM, etc.)					
Historical Sites					
Schools					
Other					
Additional Right-of-Way Required: <input type="checkbox"/> None <input type="checkbox"/> Minor (1-3 Parcels) <input type="checkbox"/> Extensive (4 or More Parcels)					
Will any Person or Business be Displaced: <input type="checkbox"/> Yes <input type="checkbox"/> No <input type="checkbox"/> Possibly					
<b>Standards</b>	<b>Existing</b>	<b>Proposed</b>	<b>Standards</b>	<b>Existing</b>	<b>Proposed</b>
Number of Lanes			Roadway Width (Shoulder to Shoulder)	ft	ft
Pavement Type			Right-of-Way Width	ft	ft
Sponsor's Signature			Title		

### Additional Information to be Furnished by the District

Functional Classification	Terrain Type	20	ADT/DHV
---------------------------	--------------	----	---------

## ITD 1150 (Rev. 3-08) Project Cost Summary Sheet

Round Estimate to Nearest \$1,000

Key Number	Project Number	Date	
Location			District
Segment Code	Begin Mile Post	End Mile Post	Length in Miles

	Previous ITD 1150	Initial or Revise To
1. Preliminary Engineering		
2. Right-of-Way: Number of Parcels                      Number of Relocations		
3. Utility Adjustments:      Work      Materials      By State      By Others		
4. Earthwork		
5. Drainage and Minor Structures		
6. Pavement and Base		
7. Railroad Crossing: Grade/Separation Structure		
At-Grade Signals      Yes      No		
8. Bridges/Grade Separation Structures:		
New Structure		
Location Length/Width		
Repair/Widening/Rehabilitation		
Location Length/Width		
9. Traffic Items (Delineators, Signing, Channelization, Lighting, and Signals)		
10. Construction Traffic Control (Sign, Pavement Markings, Flagging, and Traffic Separation)		
11. Detours		
12. Landscaping		
13. Mitigation Measures		
14. Other Items (Roadside Development, Guardrail, Fencing, Sidewalks, Curb and Gutter, C.S.S. Items)		
15. Cost of Constructions (Items 3 through 14)		
16. Mobilization              % of Item 15		
17. Construction Engineer and Contingencies                      % of Items 15 and 16		
18. Total Construction Cost (15 + 16 + 17)		
19. Total Project Cost ( 1 + 2 + 18)		
20. Project Cost Per Mile	N/A	N/A
Prepared By:		

## Local Public Agency's Certificate Of Completion Of Right-Of-Way Activities

Idaho Transportation Department



Key Number	Project Number	Project Name
Local Public Agency		

**Complete the applicable section below and the Certification section.**

**Right-of-Way is Not Required**

- All work will be done within the existing right-of-way
- No utilities are involved in this project
- Utilities are impacted and agreements are in place. Number of Utilities \_\_\_\_\_

**Right-of-Way is Required**

- Number of ownerships acquired \_\_\_\_\_ Total amount paid \$ \_\_\_\_\_
- Number of parcels in condemnation or pending final settlement \_\_\_\_\_
- Number of Relocations \_\_\_\_\_
- No utilities are involved in this project
- Utilities are impacted and agreements are in place. Number of Utilities \_\_\_\_\_

**Certification**

I hereby certify that all acquisitions and relocations, if any, were performed in accordance with our assurances to comply with state and federal laws and regulations related to the Uniform Relocation Assistance and Real Property Acquisition Policies Act of 1970 and amendments thereto.

It is further certified that in all cases where the real property rights were obtained through donation, that the property owner(s) was fully informed of the right to receive just compensation and the owner has released our agency from its obligation to appraise the property in the event that the estimated value may exceed \$5,000.00.

Agency Contact's Name (Printed)	Phone Number	E-Mail Address	
Attester's Signature (Clerk or Secretary)	Date	Chairman, President, or Mayor's Signature	Date