



Local Highway Technical  
Assistance Council  
3330 Grace Street  
Boise, ID 83703

Return Service Requested

Prsrt Std  
U.S. Postage  
PAID  
Boise, ID  
Permit No. 767

LHTAC Times Volume 09 Issue 04 June 2016

**New Summer  
LHTAC Office Hours**

*Monday—Thursday  
7:30 a.m. to 5 p.m.*

*Friday  
7:30 a.m. to noon*

If you call outside of these operating hours you will have the option to leave a message in our general mailbox or dial your parties extension at any time. There is also the option to access a company directory.

**Upcoming Calendar of Events**

Date	Event	Location
June 22-24	AIC Annual Conference	Boise Centre on the Grove
July 4	Office Closure	LHTAC Office
Aug. 12	Innovation Idea Award Deadline	<a href="http://www.lhtac.org/training/innovation">www.lhtac.org/training/innovation</a>
Sept. 26-28	IAC Annual Conference	Boise Centre on the Grove
Nov. 7-12	IAHD Convention	Sun Valley, ID

[www.lhtac.org](http://www.lhtac.org)

Volume 9  
**No.04**  
June 2016

LHTAC  
QUARTERLY  
NEWSLETTER

# LHTACTimes

**In this issue**  
 Innovation Idea Award  
 New Interactive Project Map  
 New Deputy Administrator  
 Asset Management  
 May in Motion  
 GRS-IBS Workshop  
 EDC: Smarter Work Zones  
 Equipment Maintenance

## Innovation Idea Award

**Submissions Due August 12, 2016**

The Local Highway Technical Assistance Council would like to recognize, reward and share your ideas for innovation!

Examples of innovations include cost saving techniques, developing new technology and resource sharing. LHTAC will award 2 individuals and 2 jurisdictions.

Individual awards, including \$250 cash and one FREE T2 Center Course, will be presented to the recipient before their council or commission.

Recognition for the most innovative jurisdictions will be presented at the affiliated Association meeting(s) in the fall and presented at the National LTAP Conference. These awards will include the opportunity to host a discounted T2 Course at their location with lunch provided by LHTAC.

### New Interactive Project Map

Use LHTAC's interactive project map to view, search for, and filter LHTAC projects in Idaho. The map includes project through design, construction and when they are closed. In the map tool you can select and highlight projects to view details in the data table. Click the column headers to sort the information. Project data is current with LHTAC's Map and Records System. Improvements and new features will be added as requests and needs arise.

**Take a look TODAY!**

<http://gis.lhtac.org/projects/>



## Local Highway Technical Assistance Council Members

### Association of Idaho Cities

**Mac Pooler, Chairman**  
Mayor, City of Kellogg

**Paul Loomis**  
Mayor, City of Blackfoot

**Diana Thomas**  
Mayor, City of Weiser

### Idaho Association of Highway Districts

**Terry Werner, Vice Chairman**  
Commissioner, Post Falls Highway District

**Dan Schaeffer,**  
Commissioner, Hillsdale Highway District

**Gilbert Hofmeister**  
Commissioner, Power Co. Highway District

### Idaho Association of Counties

**Mark Rekow, Secretary /Treasurer**  
Commissioner, Gem County

**Don Ebert,**  
Commissioner, Clearwater County

**Lee Staker**  
Commissioner, Bonneville County

### Ex-Officio Members

**Seth Grigg, Executive Director**  
Association of Idaho Cities

**Stuart Davis, Executive Director**  
Idaho Association of Highway Districts

**Caitlin Rusche, Government Affairs Associate**  
Idaho Association of Counties

### LHTAC Staff

Jeff Miles, PE, Administrator  
Laila Kral, PE, Deputy Administrator  
Scott Ellsworth, PE/PLS, Federal-aid Manager  
Odo Grandi, PE, Construction Engineering Manager  
Susan Lasuen, Administrative Manager  
Dan Coonce, PE, Federal-aid Engineer  
Wayne Herbel, PE, Federal-aid Engineer  
Muhammad Zubery, PE, Federal-aid Engineer  
Bryan Martin, PE, Federal-aid Engineer  
G. Daniel Shirilla, Federal-aid Financial Officer  
Craig Herndon, Federal-aid Engineer Assistant  
Heather Parker, Federal-aid Administrative Assistant  
T. Matt Koster, PE, Construction Staff Engineer  
Megan Kautz, PE, Construction Staff Engineer  
Bev Williams, Construction Records Inspector  
Kevin Kuther, PE Safety Engineer  
Steve Sprague, Safety Construction Coordinator  
Lorie Cover, T2 Training Coordinator  
Matthew Syphus, Database & GIS Analyst  
Nancy Ziebarth, Financial Specialist and Council Liaison  
Dawn Christensen, Publication Specialist  
Karissa Hardy, PE, Environmental Engineer (Part-Time)  
Roxann Hansen, Environmental Planner (Part-Time)  
Susan Kiebert, Local Communication Coordinator (Part-Time)  
Lan Smith, Local Liaison (Part-Time)  
Doug Chase, PE, T2 Instructor (Seasonal)  
Marde Mensinger, Financial Assistant (Temporary)

### T2 Center Advisory Board

**Don Barr (Chairman)**  
Street Superintendent  
City of Nampa Street Division

**Don Hutson**  
Director  
Bonner County Road & Bridge Dept.

**Kelly Brownsberger**  
Road Supervisor  
Post Falls Highway District

**Rich Regnier**  
Foreman  
Hagerman Highway District

**Dan Copeland**  
Public Works Director  
Bannock County

**Garth Newman**  
Technical Training Specialist  
Idaho Transportation Department

**Chris Fredericksen**  
Public Works Director  
City of Idaho Falls

**Rich Myers**  
Broom Crew Chief  
Ada County Highway District

**Leo Hickman, Agreement Administrator**  
Consultant Services Project Manager  
Idaho Transportation Department

**Lori Porreca, PhD, Ex-Officio Member**  
Community Planner  
FHWA-Idaho Division

## EDC: Smarter Work Zones

Exchange for Local and Tribal Agencies

Work zones are responsible for over 130 injuries, one fatality, and 10 percent of all congestion each day. One option for addressing these issues is to implement Smarter Work Zones (SWZs). SWZs utilize innovative strategies to better coordinate construction projects and/or deploy innovative technology applications to dynamically manage and minimize work zone safety and mobility impacts. SWZ techniques can improve safety and mobility for travelers, reduce schedule delays due to conflicts between projects, reduce overall operating costs to agencies, and increase the satisfaction of the traveling public, business owners, nearby residences, and politicians.



Examples of ways in which local and tribal agencies can benefit from SWZs include:

*Developing a process to better track when and where all projects that impact travel in a region are occurring, regardless of whether they are due to work by the local agency, utility company, or private developer;*

*Implementing work zone intelligent transportation systems (ITS) such as those that monitor and disseminate travel times along routes approaching work zones, allowing motorists to better choose alternate routes.*

FHWA has collected and developed a number of example policies, practices, and tools to help agencies implement SWZs. This EDC Exchange will present success stories from local agencies using SWZ project coordination and technology

application strategies to improve safety and mobility in and around work zones within their jurisdictions. It will also include discussions on planning and implementing SWZ within your region. This Exchange will be of interest to local and tribal agencies involved with or interested in implementing SWZ.

Please join FHWA, the Idaho Local Technical Assistance Program Center and the Idaho Department of Transportation for a presentation on Smarter Work Zones via a live webinar on **June 23, 2016** from 2:00 pm to 4:00 pm Eastern Time. The following are locations for your participation:

DISTRICT 1: Coeur d'Alene  
DISTRICT 2: Lewiston  
DISTRICT 3: (ITD HQ) Boise  
DISTRICT 4: Shoshone  
DISTRICT 5: Pocatello

To register email Lorie Cover at [lcover@lhtac.org](mailto:lcover@lhtac.org) and indicate the location you plan on attending.

## Equipment Maintenance

Today most equipment requires the use of a spark arrester. A spark arrester is a mechanical device that traps or destroys hot exhaust particles that have been released from an internal combustion engine.

A spark arrester works by destroying carbon particles that are greater than .023 inches in diameter. The most commonly used spark arrester traps carbon particles in the exhaust system. Then by screening the larger carbon particles out of the exhaust, the heavier particles are thrown against the walls of the arrester and into a trap.

Spark arrestors can be divided into two categories: multiposition small engine (MSE) and general purpose (GP). MSE's are designed for handheld equipment such as chain saws, blowers etc. GP's are designed for an engine that remains in a single position for tractors, motorcycles, etc.

**While spark arrestors are not 100% effective, they GREATLY reduce the risk of starting a wildfire.**

<http://www.smokeybear.com/equipment-maintenance.asp>



# Road Scholar and Master Graduates



Nolan Rehder (Master)  
Cottonwood Highway District  
*Pictured with Jeff Miles—LHTAC Administrator*



Damon Vergel (Master)  
Ron Domke (Master)  
Justin Ramm (Master)  
City of Ketchum



Casey Miller (Scholar)  
Twin Falls Highway District



Clinton Riener (Master)  
Greenecreek Highway District  
*Pictured with Jeff Miles*



Tylee Lanham (Scholar), Everett Lile (Master), Silvano Perez (Master)  
Nampa Highway District



Brendan Sprute (Master)  
Keuterville Highway District  
*Pictured with Jeff Miles*



Carl Kozain (Master)  
Mark Scherer (Master)  
City of American Falls

## T2 Spring Classes

This spring the T2 Center offered 76 classes with 1,385 attendees from March 1st through June 13th.

*This is an increase from last spring!*

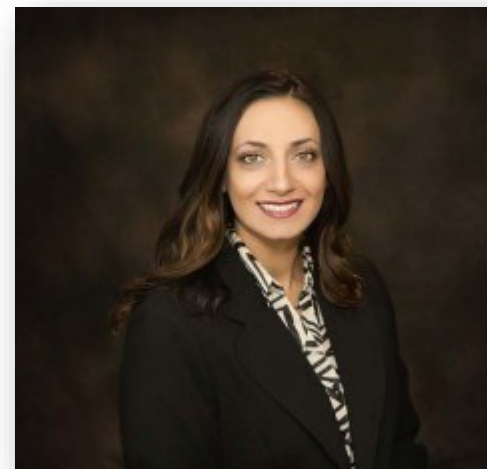


**Looking for a certain class in your area?**

Email your course requests to the T2 Center by August to be considered for the fall class schedule.

[idahot2@lhtac.org](mailto:idahot2@lhtac.org)

## New Deputy Administrator



We are pleased to announce that Laila Kral, our T2 and Safety Manager has been named the new Deputy Administrator for LHTAC. Laila has been with LHTAC for the last four years and has been managing the T2 Center, the Local Rural Highway Investment Program (LRHIP) and the Local Highway Safety Improvement Program (LHSIP).

Laila has been instrumental in the success of the LHSIP program, along with streamlining LRHIP and the T2 Center. She will continue to manage these programs while taking on the additional responsibilities of the Deputy Administrator.

## Asset Management



LHTAC strongly encourages all local road jurisdictions to use an asset management system to aid in tracking and planning road assets and their maintenance. Each jurisdiction can decide what system best fits their needs and budget. To help provide a low cost option, LHTAC and iWorq negotiated a solution for Idaho's local road jurisdictions.

### Updated iWorq Agreement

LHTAC and iWorq have signed an updated agreement for most local jurisdictions to use iWorq's Pavement Management and Sign Management software at no cost.

The agreement applies to:

- all cities of population 6000 or less,
- counties,
- highway districts, and
- tribes and reservations.

Regular support for those programs is also provided by iWorq. **Please note that the agreement is for the use of local road jurisdictions.** Consultants or contractors who wish to access data or use the software on behalf of jurisdictions require written permission from the jurisdiction and a fee for time from iWorq. iWorq has specified those fees as follows:

- Consultant access to a single jurisdiction is \$100 per year, maximum \$1000 per year.
- \$75 per hour for work performed for consultants.
- \$500 import fee to bulk update information. (Applies to jurisdictions or consultants. Updating through the software is free.)

Please contact LHTAC for more information.



## LHTAC Receives MiM Platinum Level!

During the month of May we became **Transportation Champions** and you can too! It's pretty easy. Get your organization involved in May in Motion by encouraging your employees and co workers to ride, walk, vanpool and ride the bus to work. May in Motion is an annual event hosted by Commuteride. For more information on the program visit <http://www.commuteride.com/may-in-motion/>.

# Road Scholar and Master Graduates



Brett Engel (Scholar), John Churchill (Scholar),  
Luke Churchill (Scholar),  
Independent Highway District  
*Pictured with Laila Kral—LHTAC Deputy Administrator*



Robert Kruger (Scholar)  
Clarkia Highway District



Jeff Kasma (Master), Jeff Azevedo (Master), Brad Farner (Master)  
City of Nampa



Dan Mooney (Master)  
Worley Highway District



Shawn Burton (Master)  
City of Albion  
*Pictured with Scott Ellsworth—LHTAC Federal-aid Manager*



Kathy Knapp (Scholar) and Steve Pemberton (Master)  
Canyon County Highway District  
*Pictured with Commissioner Gibbons, Commissioner Youngblood,  
Commissioner McEvoy and Laila Kral*



Wayne Skelton (Scholar), Trevor Tolman (Scholar), Terry Berry (Scholar)  
Bonneville County Road and Bridge  
*Pictured with Scott Ellsworth, Commissioner Staker, Steve Rounds and Kevin Eckersell*



Jake Kuecker (Scholar), John Matthews (Scholar), Adam Miller (Scholar), Dustin Jewett  
(Scholar), Kane Scott (Scholar), Forrest Machado (Scholar), Gene Palmer (Scholar), Marvin  
Harrigan (Scholar)  
City of Mountain Home



Dallas Erickson (Master)  
Colebee Knudsen (Master)  
Scott Hitt (Scholar)  
Raft River Highway District

## GRS-IBS Workshop

LHTAC applied for Incentive Funding to provide a demonstration workshop on Geosynthetic Reinforced Soil–Integrated Bridge System (GRS–IBS) bridge construction at two locations in southeast Idaho. The workshop will include a day of class instruction using FHWA experts and a day of onsite observation of the construction.

LHTAC will collect information from the workshop and site visit to compile “Best Management Practices for GRS-IBS Bridge Construction” material to distribute to locals in the future. The goal of this workshop is to enable LHJs to develop an understanding of GRS-IBS substructures, as well as the safety and financial impacts it could have in their jurisdictions. This is new technology for LHJs in Idaho. This demonstration workshop will provide an opportunity to show LHJs a lower cost bridge construction option and provide long-term cost savings for the replacement of thousands of local bridges in the state.

## Interested in attending?

Cost of attending this workshop will be funded through the grant. At this time we are looking for a rough estimate of who would be interested in attending this workshop. If we reach our max amount of attendee funding we may limit the amount of attendees to only two per jurisdiction. Please help us plan for attendance by clicking the link below and filling out your information. The focus audience for this workshop is roadway supervisors, foreman and employees.

RSVP at

<http://grsibs.rsvpify.com/>