



LHTAC's Bridge Map

Improved Online Tool

Get online and give our bridge map tool a try!

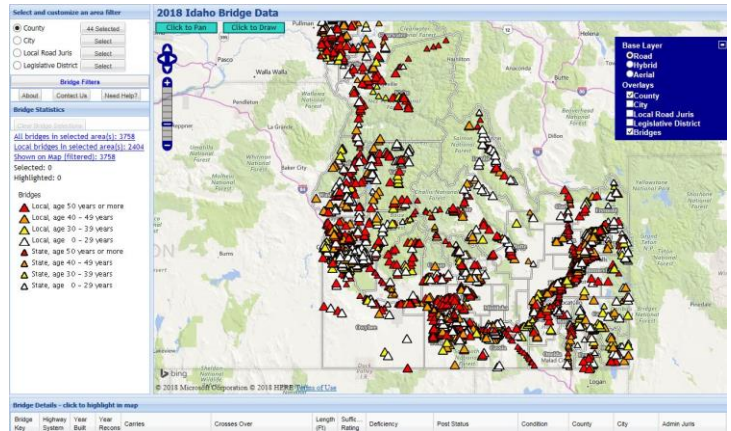
<http://gis.lhtac.org/bridges/>

What is it?

Use LHTAC's interactive bridge map to view, search for, and filter all local and state bridges in Idaho. Data is from the Idaho Transportation Department.

What's New?

There are several improvements to LHTAC's Bridge Web Map, most importantly updated bridge information.



The previous data from 2014 has been replaced with a download from Feb 22, 2018. Updating the information used to require an involved process to get it from FHWA's National Bridge Inventory (NBI) into suitable form for the web map. Now it is downloaded from ITD, where it is updated more often and generally available before it is sent to FHWA's NBI.

Now you'll know when the data was updated.

Legisl... District	Date Received
23	2018-02-22
23	2018-02-22
23	2018-02-22
23	2018-02-22
23	2018-02-22

The new process will also allow for more frequent updates of all bridge data. Currently, there is no set timeframe, but LHTAC's bridge map should be updated several times per year. The date a bridge record was last retrieved will show in the right-most column: "Date Received".

You'll have more fields to narrow your search.

Several new fields have been added to the bridge details, including the year a bridge was reconstructed ("Year Reconstructed"), the post status ("Post Status"), and overall condition ("Condition"). Additional attributes may be displayed.

Just mouse over any column header, click the arrow, and choose "Columns". There will be several more options such as "Inspection Date", "Deck Width", "Deck Str Type", and more. Turn columns on and off to suit your needs. All attributes are included in spreadsheet downloads by clicking the blue links in the Bridge Statistics.

This [Interactive Bridge Map](#) link can be found on our website www.lhtac.org under the [Resource Tab](#).

