

LHTAC—Council Members (July 2018—June 2019)

Cities (Mayors)	Highway Districts (Commissioners)	Counties (Commissioners)	Ex-Officio Members (Executive Directors)
*Diana Thomas—City of Weiser	*Gilbert Hofmeister—Power County HD	*Todd Smith—Madison County	Seth Grigg, Idaho Association of Counties
Robert Berlin—City of Roberts	Neal Gier—Buhl HD	Don Ebert—Clearwater County	Vacant, Association of Idaho Cities
Mac Pooler—City of Kellogg	Terry Werner—Post Falls HD	Mark Rekow—Gem County	Nick Veldhouse, Idaho Association of Highway Districts
*Chair	*Vice Chair	*Secretary/Treasurer	

LHTAC Projects Since Inception

Total Projects by ITD District	LRHIP	Federal-aid & Safety
ITD District 1	93	147
ITD District 2	109	86
ITD District 3	127	142
ITD District 4	103	101
ITD District 5	87	52
ITD District 6	96	112

Programs Administered by LHTAC

New projects added this fiscal year:

Local Rural Highway Investment Program (LRHIP) Includes 2019 Emergency Projects	(Grant)
FY19 Projects	43
FY19 Funds	\$2.6M

Local Highway Safety Improvement Program (LHSIP)	(Federal-aid)
FY19 Projects	21
FY19 Funds	\$8.8M

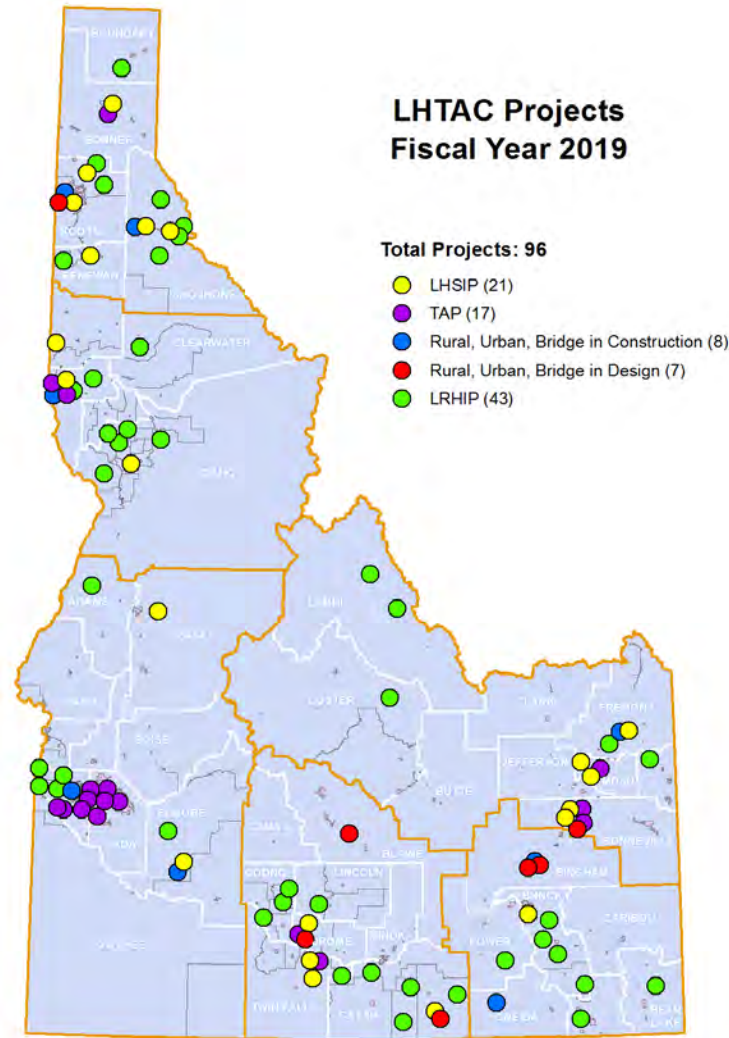
Federal-aid Bridge	Federal-aid Urban Transportation Plans	Federal-aid Rural	Federal-aid Construction
New Projects 3	New Projects 2	New Projects 2	FY19 Projects 8
New Funds \$6M	New Funds \$250K	New Funds \$4M	FY19 Funds \$22.8M

Other Projects Administered by LHTAC

ITD—Transportation Alternative Program	
FY19 Projects	17
FY19 Funds	\$6.9M

LHTAC administers other projects as requested. These projects include:

Federal Lands Access Program
Managed by Western Federal Lands
Freight
Managed by ITD



Pine Road Bridge
Federal-aid Bridge
Mountain Home Highway District & Glenns Ferry Highway District
Jeff Werner, T-O Engineers, 1st Place LHTAC Photo Contest



Paradise Path Underpass & Multi-Modal Extension
Transportation Alternatives Program
City of Moscow
Zackery Ellis, Computer Systems & Digital Media Specialist



Gravel Crushing and Chip Sealing
Local Rural Highway Investment Program
Hagerman Highway District
Steven Yearsley, Forsgren Associates Inc.



Bottle Bay Intersection and Underpass Tunnel
Local Highway Safety Improvement Program
Bonner County Road and Bridge
Matt Mulder, Bridge Engineer Staff



FY19 Annual Report

July 2018—June 2019

Local Highway Technical Assistance Council

As challenges flex and staff changes, LHTAC has shown amazing resilience in shifting to meet every challenge. This is largely from excellent and empowered staff who have fantastic enthusiasm and drive. We focus on quality, communication, and coordination to turn every task from good to great. In looking back over the year, I am always impressed with our service and attention to Local Highway Jurisdictions (LHJs).

LHTAC is striving to enhance the services we provide to LHJs by focusing on bridges, both short and long, new programs, project requests, and expanding into successful federal grants and innovative construction, all while providing great technical assistance wherever possible.

As the Administrator, I look forward to serving the legislature, LHJs, and as always the great people of the State of Idaho in the best manner possible.

Jeff R. Miles, P.E.
LHTAC Administrator



Recognition

WTS is an international organization dedicated to building the future of transportation through the global advancement of women. The WTS SW Idaho Chapter met on February 21, 2019 to celebrate those who've made valuable contributions to the transportation industry.

LHTAC took the stage for multiple recognitions.

**Local Highway Technical Assistance Council
Employer of the Year**

Susan Kiebert
LHTAC Local Communication Coordinator
Woman of the Year Award

Jeff Miles
LHTAC Administrator
Secretary Ray LaHood Award

Megan Kautz
LHTAC Resident Engineer
Innovative Transportation Solutions Award
Megan was recognized for the \$3.5M Pine Road Bridge project.

T2 Center

The T2 Center is a Local Technical Assistance Program (LTAP) Center and funded by federal funds through Federal Highway Administration (FHWA) and then matched by the state. We offer classroom training with a focus on safety, professional development, construction and maintenance techniques.

Since 2009, over 1,050 classes have been offered across Idaho. There have been 819 Road Scholars and 413 Road Masters earned by local employees.



Trucking



Technical Assistance & Analysis Funding Program

LHTAC provided outreach regarding Idaho Transportation Department's (ITD) opting-in process. ITD can issue over-legal trucking permits on behalf of the LHJ once the local has approved the route.

Outreach efforts included; presentations to regional transportation groups as well as a dedicated portion of the LHTAC Annual Workshop presentations. Emphasis has been made to reflect the benefits of a contiguous freight network as well as the importance of communicating with the trucking community.

LHJs are provided resources to assist them in determining the viability of a proposed route and information about the existence of funding available to assist them with the cost of analyzing the route.

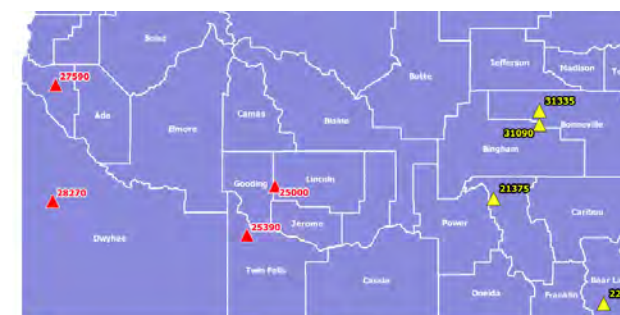
Competitive Hwy Bridge Program

Idaho secures grant funding to replace bridges with GRS-IBS innovative technology.

LHTAC used Technical Assistance funds to help prepare the award winning application, along with a consultant and coordination with eight LHJs.

\$225M was awarded to 18 states, including \$6.2M for Idaho.

These funds will be used to replace eight bridges in poor condition, support economic activity and improve connectivity on local roads in southern Idaho. The consideration of geosynthetic reinforced soil-integrated bridge systems (GRS-IBS) in the construction of these bridges will support early success of this innovative technology in Idaho and continue to improve its cost-effectiveness on future projects. Without LHTAC's efforts, these bridges would remain in poor condition and the \$6.2M of Federal funds would not have come to Idaho to aid these local jurisdictions.



Local Strategic Initiatives & Children Pedestrian Safety

During the 2017 Legislative Session, the Surplus Eliminator was approved for two additional years, adding the Local Strategic Initiatives (LSI) Program and the ability to spend money on Children Pedestrian Safety (CPS) projects. LHTAC and ITD jointly funded the CPS Program with \$2M awarded to locals as \$250K grants. The LSI program awards grants, up to \$1M, to local agencies. The projects focus on safety, mobility, and commerce while satisfying a maintenance need. Outreach through 10 funding workshops, presentations at conferences, transportation meetings, and email blasts was extensive. In 2019, LHTAC received:

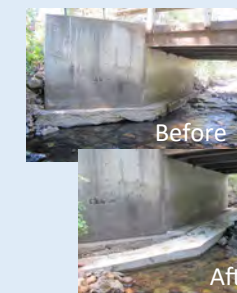
- 92 applications requesting over \$69.8M for the LSI program (29 Awarded \$23.6M)
- 65 applications requesting over \$12.7M for the CPS program (11 Awarded \$2M)

LHTAC Outreach Workshops

Staff traveled to 10 locations throughout Idaho during the month of October. These FREE workshops were open to everyone: sponsors, clerks, consultants, local elected officials, etc. The focus was to educate on who LHTAC is, what services we provide, and communicate any pertinent updates regarding the local transportation community. We covered the upcoming funding applications and had over 200 attendees.

Bridge Technical Assistance

LHTAC has been working directly with locals to provide an in depth look at the jurisdiction's bridge inventory and help prioritize their bridge needs based on the following:



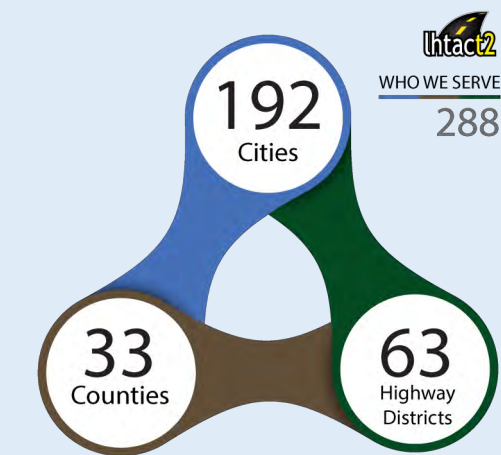
- Bridge Maintenance
- Bridge Preservation
- Bridge Repair
- Bridge Replacement

Rush Creek Bridge Washington County

Who We Serve

There are currently 288* Local Highway Jurisdictions with road ownership in Idaho. There are nine cities and eleven counties who have roads that are maintained by their local highway district.

*This number may fluctuate with consolidations.



Small Bridge Inventory

Collecting data on local bridges 10 – 20 ft.

LHTAC developed a tool that LHJs can utilize to collect an inventory of small bridges/culverts that fall below the National Bridge Inventory (NBI) criteria (<= 20 feet in length). This data will be useful to LHJs to plan for repair or replacement of this critical infrastructure and provide valuable information on the location, type of structure, and overall number of these structures that exist statewide.

